

AN UNEXPECTED VIEW ON BRUSSELS

TH



The Hotel

DE SILVAUX

WHY BRUSSELS?

We would need more than a slide to explain why Brussels is one of the most attractive city in Europe but we will try to summarise the most interesting points as best we can.

First of all let's mention its **strategic location**. Brussels is easily reachable by air, car, and rail, from everywhere in the world. Once here, thanks to a great public transportation system, it's simple to navigate within the city.

Visitors appreciate the **quality of life** in Brussels, not least the great food, with more than 2,500 restaurants and many top quality on-site catering. On another hand, Brussels is emerging as an exciting contemporary creative hub. The local film industry is booming, museums and art galleries flourish, and 18,000 cultural events take place every year.

On a green note, Brussels has made great progress towards becoming a more eco-friendly destination and was recently voted **No. 1 sustainable city in Europe** for environmental policy.

BRUSSELS IN NUMBERS

- 3 main universities, 7 university hospitals and 24 healthcare centres
- N°1 country in Europe in terms of clinical trials per capita and N°2 worldwide
- Strong innovator: N°10 city worldwide with capacity for innovation
- N°1 sustainable city in Europe in terms of environmental policy
- N°1 city for headquarters of international associations
- 183 nationalities, 108 different languages spoken, 3 official languages
- N1 destination for congresses and meetings in Europe & 2nd in the world (around 600/year)
- Around 210 venues for events with 10 to 15.000 persons, 1.237.400 m² convention centre space
- 200 hotels with 20.000 bedrooms
- 478 media represented, including 99 television stations and 191 newspapers and magazines
- 18.000 cultural events every year

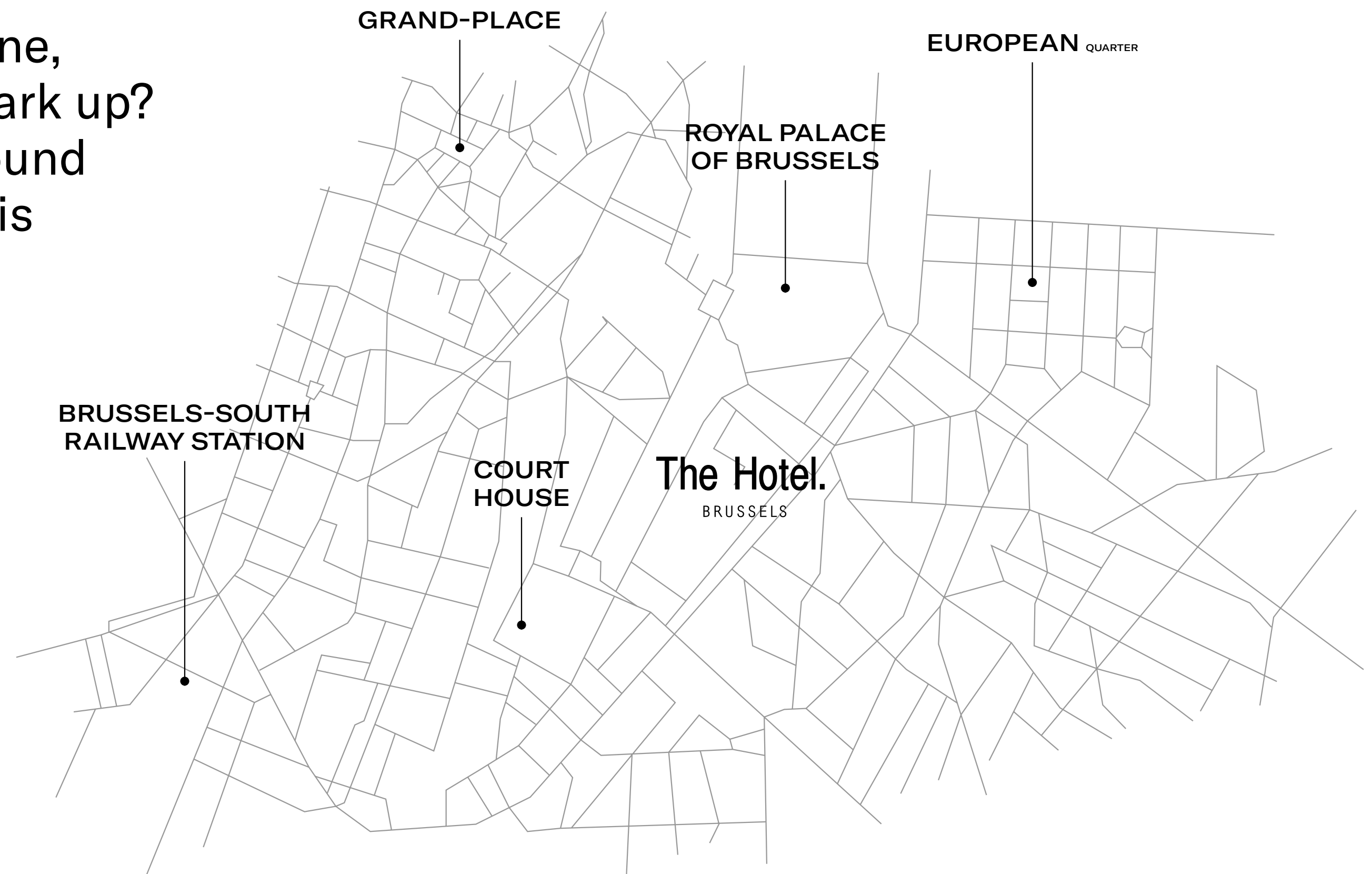
The Hotel is centrally located on Boulevard de Waterloo, surrounded by high-end stores and parks.

Le Sablon is right around the corner with many exclusive antique shops to explore.

The Hotel is easily accessible, arriving by plane, public transport or car is a breeze. Need to park up? You're covered – The Hotel's secure underground parking lot has 120 spaces and the entrance is alongside The Hotel entrance.

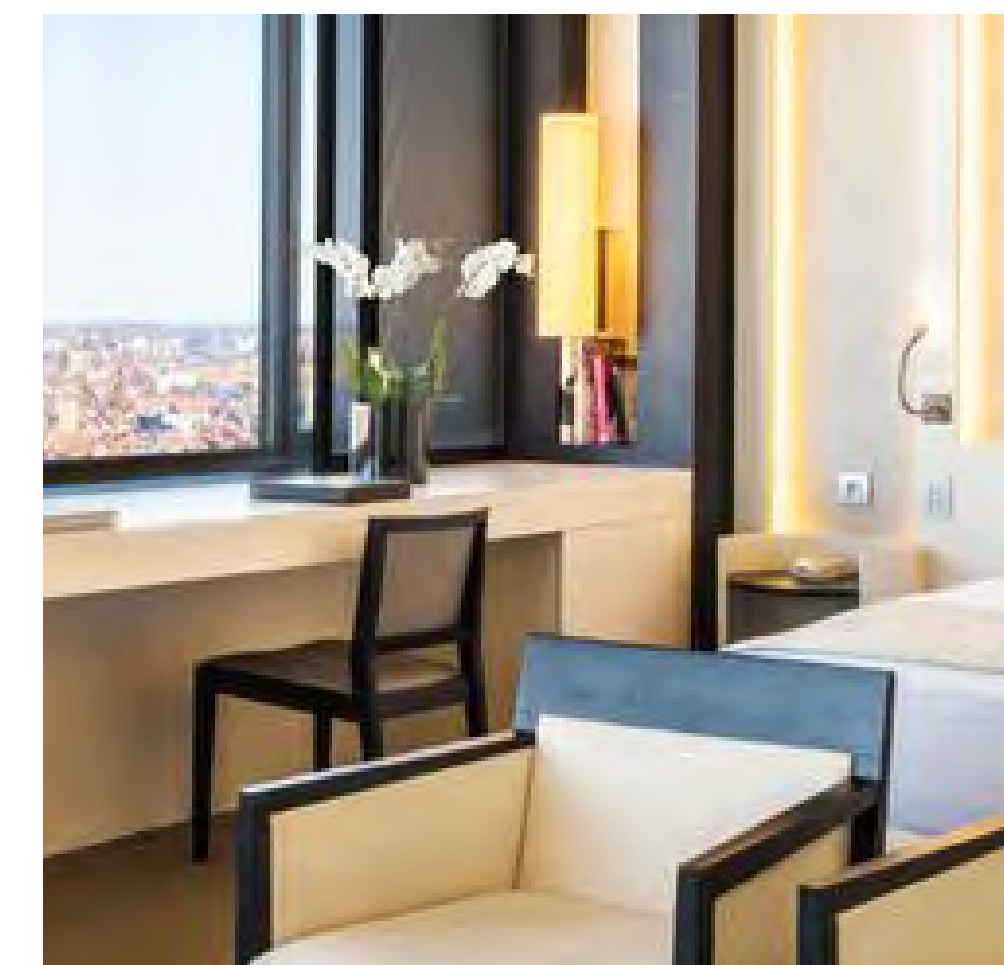
LOCATION

[VIEW ON GOOGLE MAPS](#)



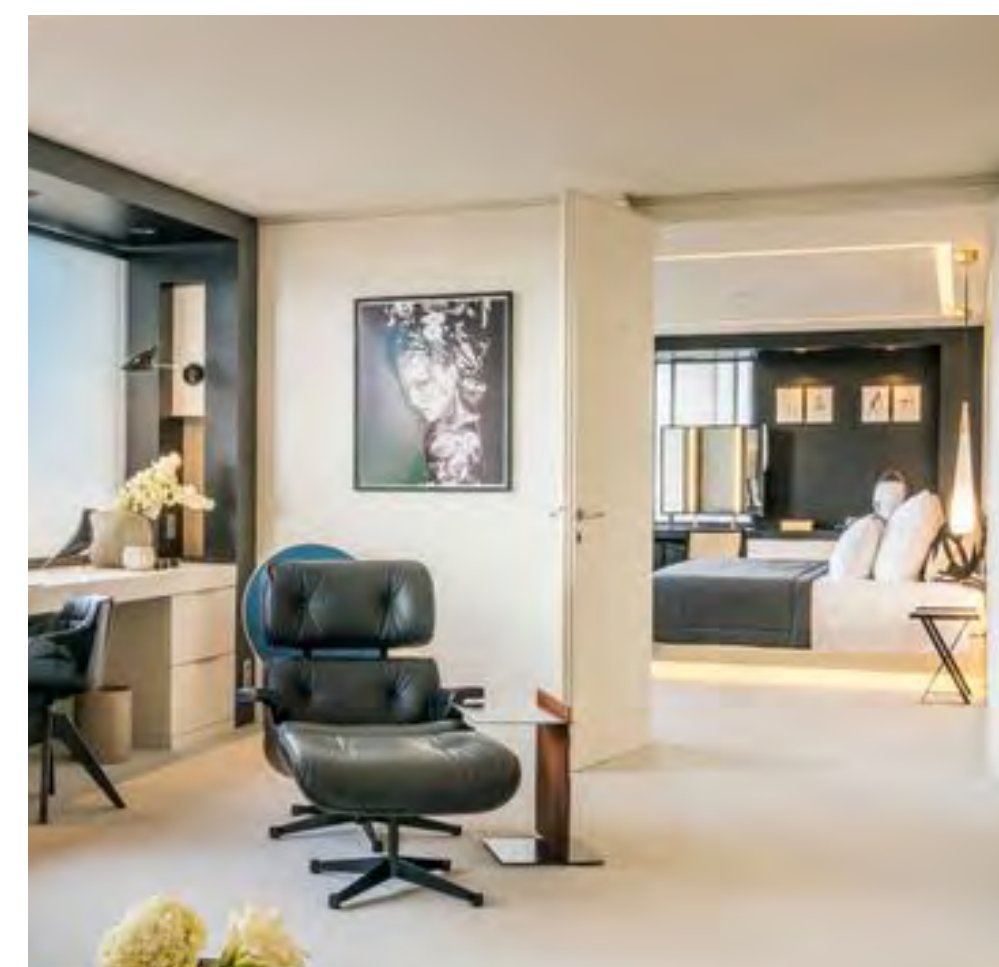
ROOMS

Kick off your urban adventures with a new perspective on Brussels. Standing tall above the Brussels skyline, the Hotel gives you a city view with a difference – come join us up here and experience a stay like no other.



Our rooms offer you a unique experience with a stunning, panoramic view of the capital and its iconic landmarks.

- 422 rooms
- Blackout screens
- Complimentary minibar
- Nespresso and tea facilities
- Eco-friendly bath products





SUPERIOR ROOM

[VIRTUAL TOUR](#)



DELUXE PANORAMA

VIRTUAL TOUR



PANORAMA SUITE

VIRTUAL TOUR



SPLENDOUR SUITE

VIRTUAL TOUR



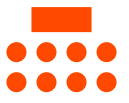






MEETING ROOMS

From sky-high meeting rooms with a view to remember to gatherings for 400+ guests, together with The Hotel, your event will be a headliner.

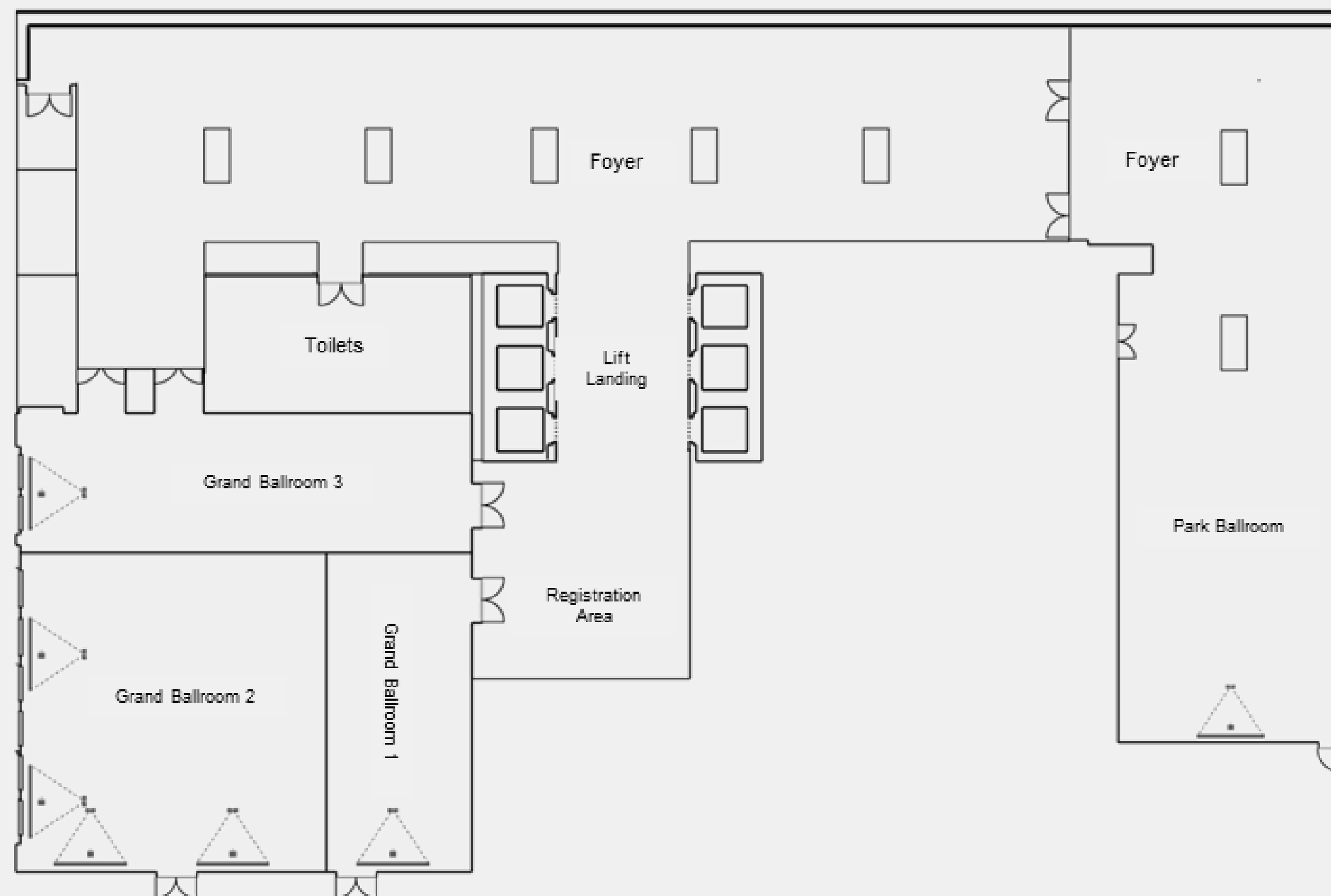
- 12 Meeting rooms for up to 400 people
- Free unlimited high-speed WiFi
- Built-in projectors and screens
- Electric sunscreens
- Complimentary refreshments
- Coffee breaks/lunch in open-space foyer
- 100 underground parking spaces



CAPACITY CHART

	SIZE	M ²	SQ FEET	H	 THEATRE	 CLASSROOM	 CABARET	 U SHAPE	 BOARDROOM	 BANQUET	 COCKTAIL
1st FLOOR											
Grand Ballroom	20 x 19	380	4090	3,3	350	200	176	63	60	340	400
Park Ballroom	17 x 10	170	1829	3,3	170	96	88	54	40	140	200
25th FLOOR											
Meet 25.1	7,6 x 7,0	53	570	2,58	36	24	24	18	16	30	x
Meet 25.2	7,0 x 7,6	53	570	2,58	36	24	24	18	16	30	x
Meet 25.3	15,9 x 7,1	112	1206	2,58	62	33	30	18	18	30	x
26th FLOOR											
Meet 26.1	13,3 x 7,6	97	1044	2,58	72	53	48	36	30	50	60
Meet 26.2	9,1 x 7,1	59	635	2,58	36	24	25	20	18	32	30
Meet 26.3	13,3 x 6,9	93	1001	2,58	72	54	48	36	30	50	50
Meet 26.4	9,1 x 7,1	59	635	2,58	36	24	25	20	18	32	30
27th FLOOR											
Vista	16,1 x 11,8	222	2390	2,95	180	108	91	48	42	140	180

FIRST FLOOR



	SIZE	M ²	SQ FEET	H
1st FLOOR				
Grand Ballroom	20 x 19	380	4090	3.3
Grand Ballroom 1	6,3 x 13	82	882	3.3
Grand Ballroom 2	13,5 x 13	175	1851	3.3
Grand Ballroom 3	20 x 6	120	1291	3.3
Grand Ballroom 1&2	20 x 13	260	2800	3.3
Park Ballroom	17 * 10	170	1829	3.3



GRAND BALLROOM

VIRTUAL TOUR

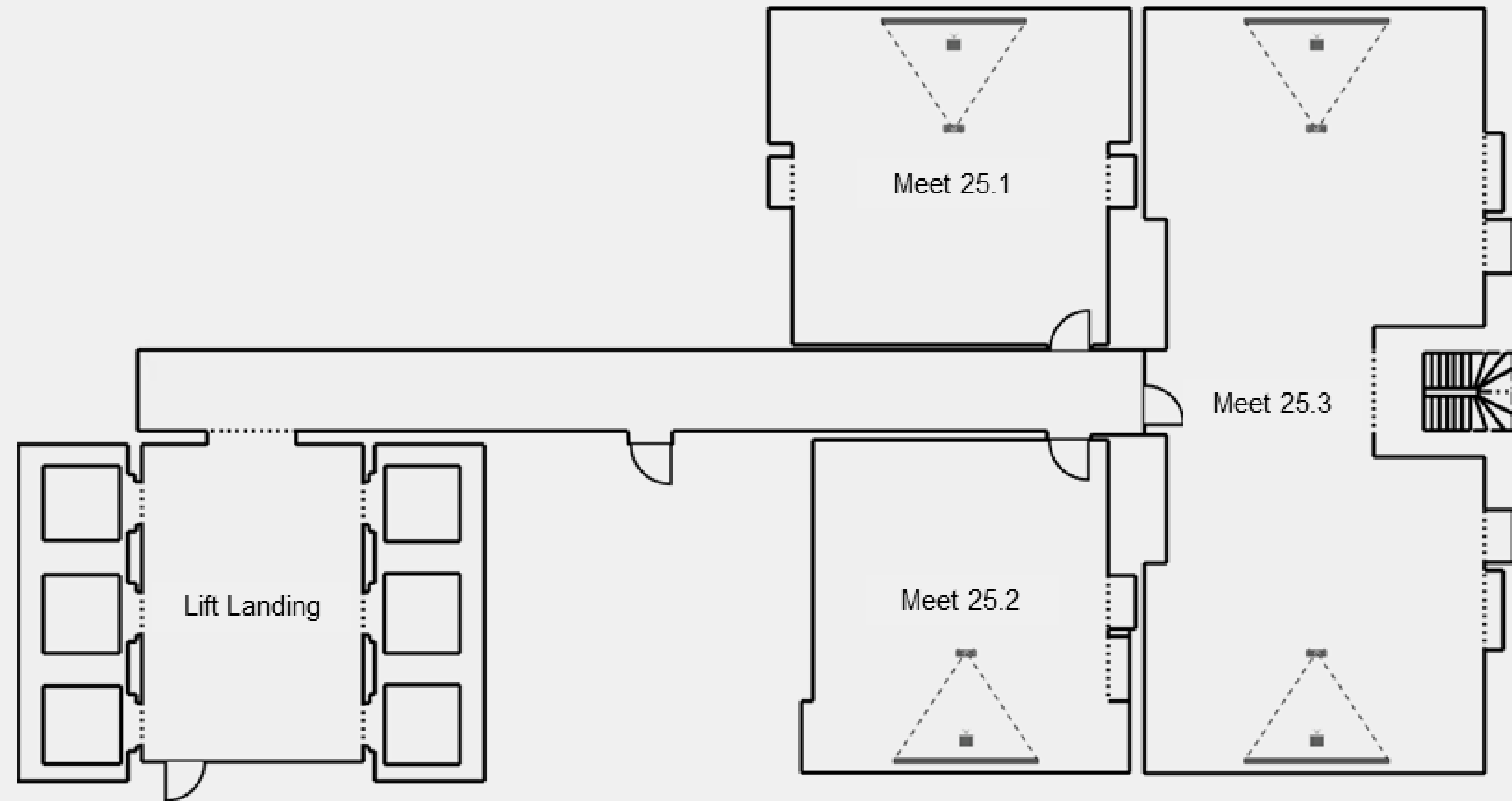


PARK BALLROOM

VIRTUAL TOUR

FLOOR 25

25

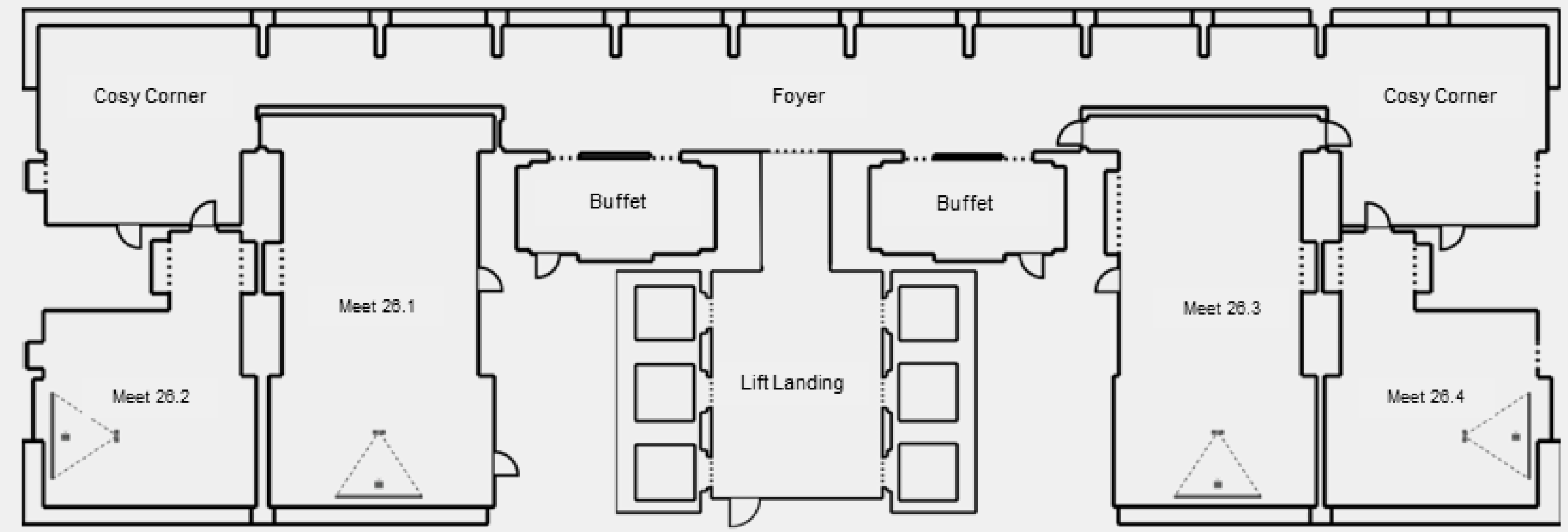


	SIZE	M ³	SQ FEET	H
25th FLOOR				
Meet 25.1	7.0 x 7,6	53	570	2.58
Meet 25.2	7.0 x 7,6	53	570	2.58
Meet 25.3	15,9 x 7,1	112	1205	2.58



FLOOR 26

26

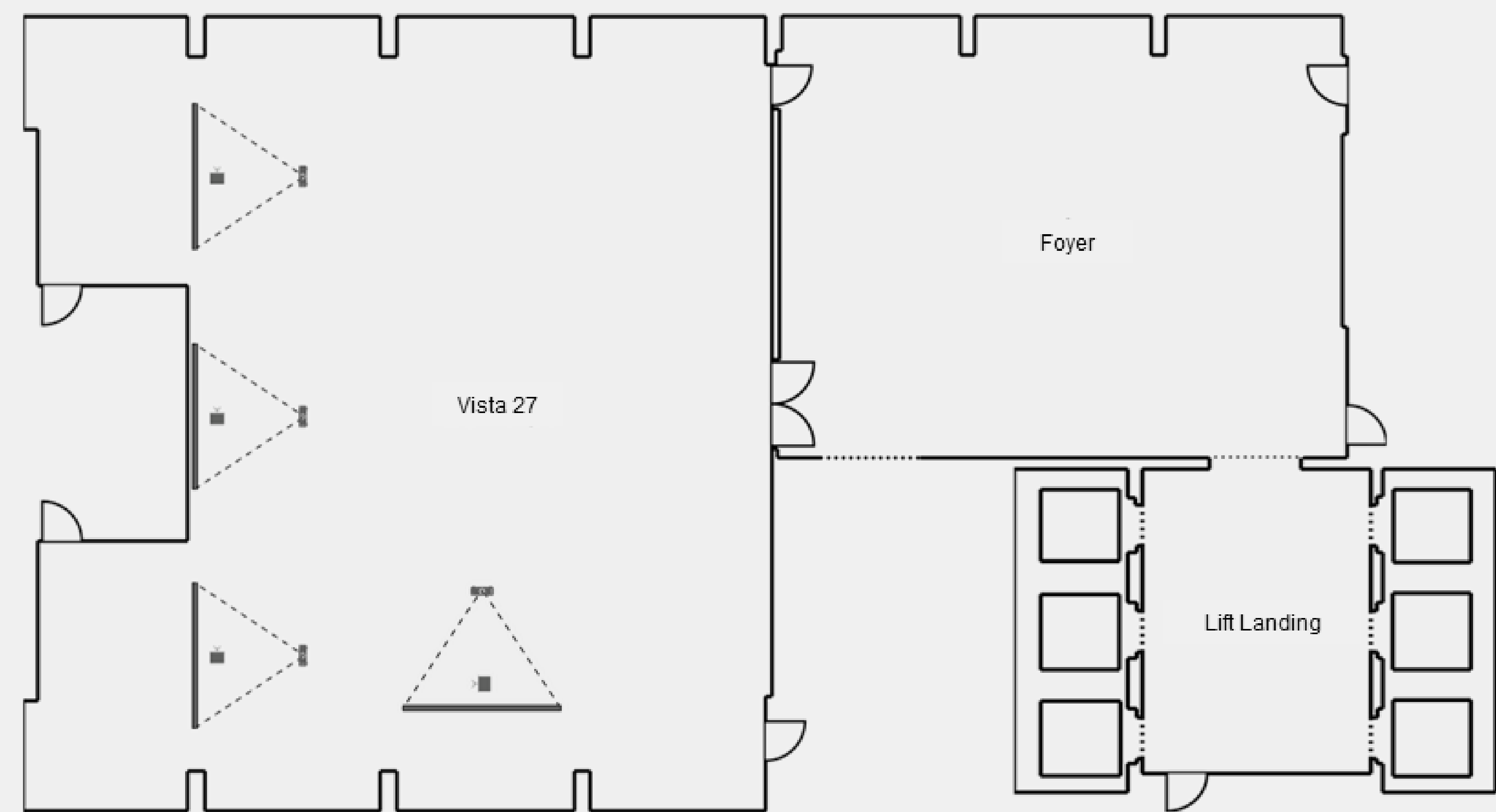


	SIZE	M ³	SQ FEET	H
26th FLOOR				
Meet 26.1	13,3 x 7,6	97	1044	2.58
Meet 26.2	9,1 x 7,1	59	635	2.58
Meet 26.3	13,3 x 7,6	97	1044	2.58
Meet 26.4	9,1 x 7,1	59	635	2.58



FLOOR 27

27



	SIZE	M ³	SQ FEET	H
27th FLOOR				
Vista	16,1 x 11,8	222	1389	2,95



THE IRIS

A place where creativity meets international flavour. Refurbished in early 2022, in collaboration with the Belgian interior design house, SCAPA, The Iris offers a capacity of 110 places.

With simple lines, lush greenery and rich accents of gold and navy blue, our reimaged space echoes its namesake, the enduring – and elegant – symbol of Brussels. We extend a warm welcome to partners and patrons who share our innovative, experience-driven approach to drinks and dining.





GOLD ROOM

VIRTUAL TOUR



PANORAMA LOUNGE

Standing tall on the 24th floor, the Panorama Lounge makes for a serene hideaway. Exclusively for guests staying in Deluxe Panorama rooms and Suites, come enjoy the view with unlimited drinks and snacks and browse the Hotel's library of glossy mags and books.

THE URBAN SPA & FITNESS

Exercise, relax, revitalise and recharge on the 23rd floor of The Hotel at one of the best hotel spa in Brussels. Work out with the city at your feet using our fully equipped gym – the perfect place to break a sweat.

After your gym session, our Swedish-inspired steam room and sauna is the ideal spot to get your feel-good fix and for the ultimate rejuvenation, book a spa treatment with our exclusive partner, Nadine Salembier Institute, located 100m from The Hotel.





WWW.THEHOTEL.BE | SALES@THEHOTEL.BE | +32 2 504 11 11