



CITY OF DREAMS
MEDITERRANEAN





City of Dreams Mediterranean has direct access to the main highway network through an existing four-lane road.



- 50 minutes / 75.6 km
from Larnaka International Airport

- 40 minutes / 61.7 km
from Pafos International Airport

- 15 minutes / 6.4 km
from the Limassol Marina

- 10 minutes / 2.4 km
from the Limassol port

location

-  Integrated Resort
-  International airport



discover









accommodation

SUPERIOR ROOMS

mountain
or scenic view

Sink into relaxation at this blissful retreat with soft and calm tones, in perfect Mediterranean style. Situated between the 3rd and 5th floor, the Superior rooms share the view of the manicured gardens and fountains of the resort's entrance.

49m²

114 rooms with king beds

62 rooms with twin beds



PREMIER ROOMS

mountain
or scenic view

These spacious rooms have premium views of the Troodos mountain range or the resort gardens and pools with the Mediterranean sea in the horizon.

49m²
140 rooms with king beds
106 rooms with twin beds



premier & superior

ROOMS

with king or twin beds

Premier & Superior rooms are available with interconnecting doors to accommodate up to 6 guests over 100m²



232 rooms
with king beds

167 rooms
with twin beds

bathrooms

- Large marble bathrooms
- Oversized bathtub & separate walk-in rain shower
- Floor-to-ceiling window with privacy shade



JUNIOR SUITES

scenic view



The junior suites offer scenic views to the manicured gardens & pools of the resort.

75m²
22 suites with king beds

junior

SUITES

with king or twin beds



Grand scenic views offer 75m²
of space, with walk-in wardrobe,
wet room and a 25m² balcony



• THE
Suites

SKY SUITES

with ofuro tub

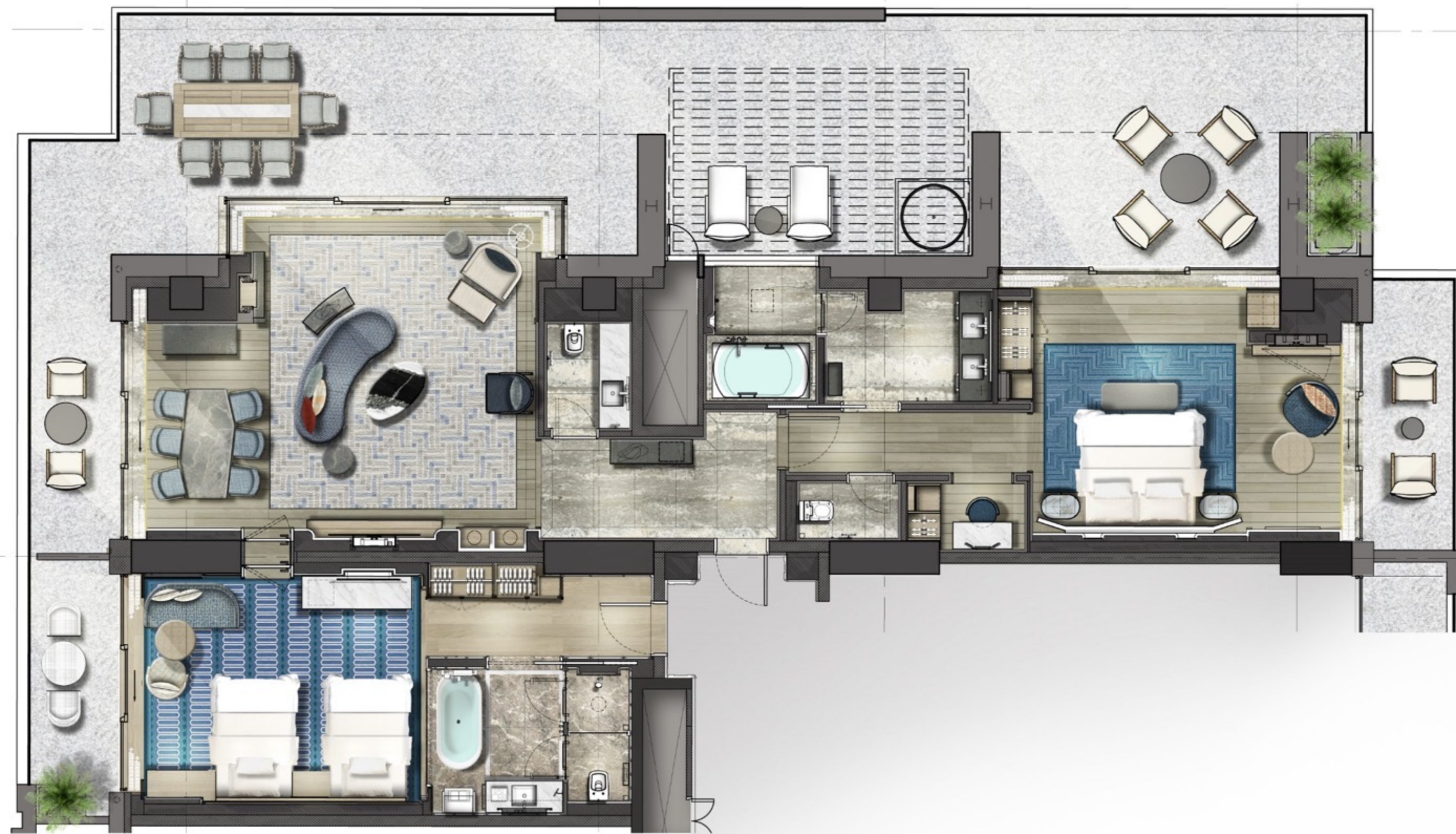
The Sky suites offer uninterrupted panoramic views of the Limassol skyline to the east, or the Akrotiri Salt Lake to the west, both backdropped by the tranquil waters of the Mediterranean sea and the Troodos mountain range.

155m²
9 Suites



SKY SUITES

with ofuro tub



PANORAMIC

Suites



The Panoramic suites offer scenic views of Akrotiri Salt Lake to the west, and Limassol to the east, backdropped by the tranquil waters of the Mediterranean sea and the Troodos mountain range.

255m²
13 suites

PANORAMIC

Suites



GRAND *casino*



Center Stage
CITY OF DREAMS
02817255893632



Platinum Club

TYPES OF *games*

- Slot Machines
- American Roulette
- Russian Poker
- 3 Card Poker
- Stud Poker
- Mini Punto Banco
- Blackjack
- Semi-live Electronic Dice
- Ultimate Texas Hold 'em
- Texas Hold 'em
- Omaha Hold 'em
- Caribbean Stand Poker
- Baccarat

Including a
Designated Poker Area





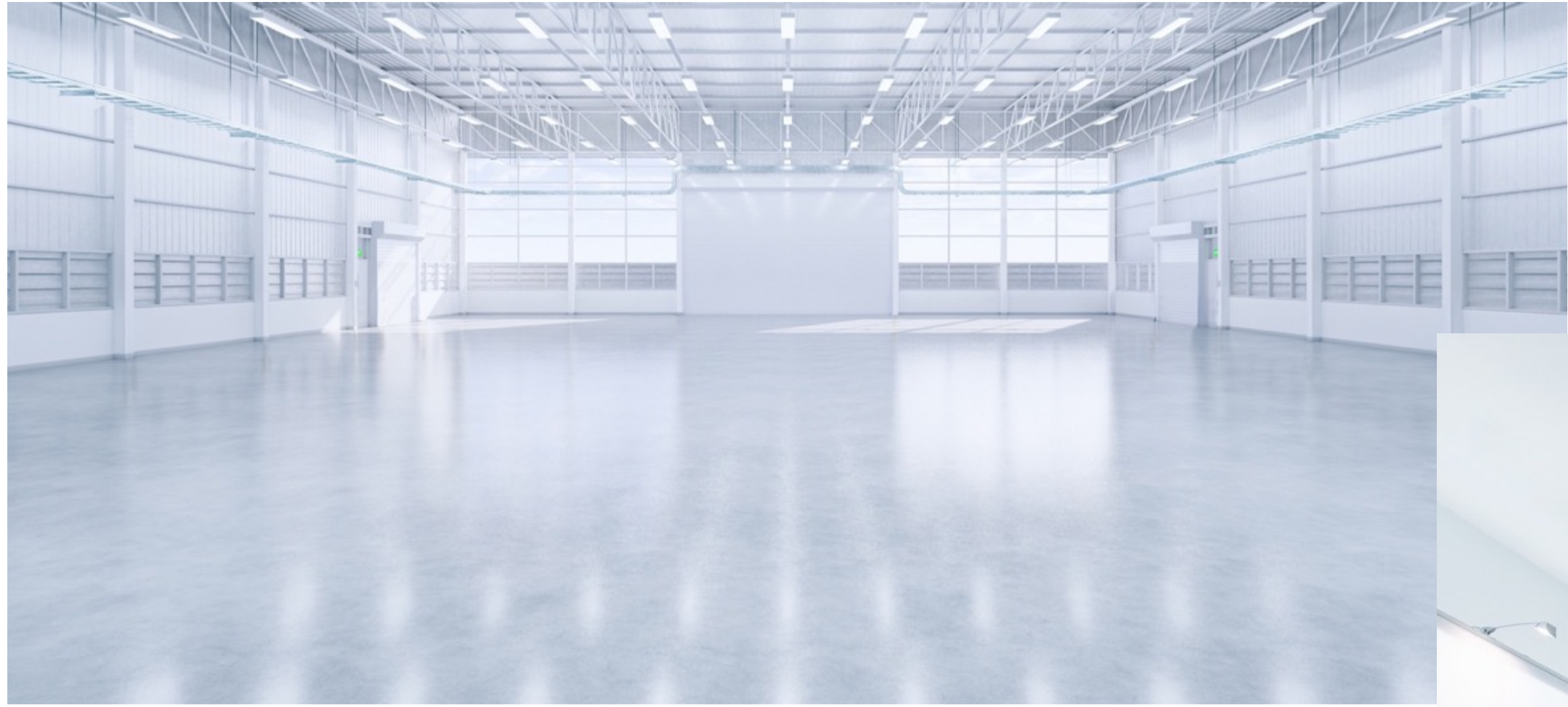
conference

GRAND *ballroom*



The **largest** ballroom
in **Cyprus**

	Area (m ²)	Height (m)	Daylight	Theatre (capacity)	Classroom (capacity)	Banquet (capacity)	Cocktail (capacity)	Exh Booth (3X3) (capacity)	Cabaret
Grand Ballroom	1420	6.5	✓	1420	1040	880	1100	65	528
Section 1	420	6.5		400	270	220	320		132
Section 2	500	6.5		540	370	290	400		174
Section 3	500	6.5	✓	480	370	290	400		174
Pre-function Area	630						600		
Outdoor Pre-function Area	970						800		



Column-Free Forum



THE *forum*

	Area (m ²)	Height (m)	Theatre (capacity)	Classroom (capacity)	Banquet (capacity)	Cocktail (capacity)	Exh Booth (3X3) (capacity)
The Forum	1500	12	1500	1130	960	1300	72

*photos are examples of set-up



meeting

ROOMS



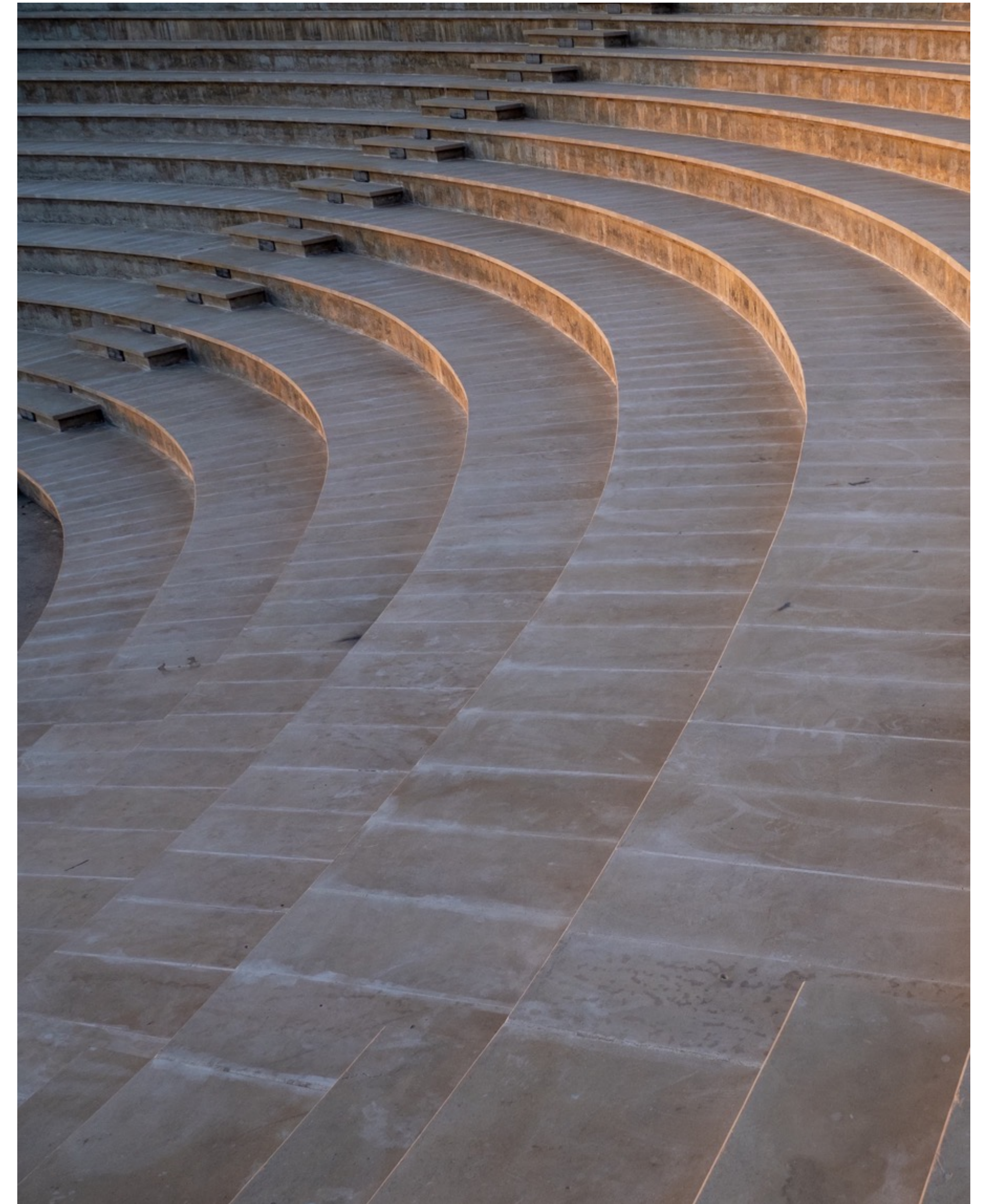
	Area (m ²)	Height (m)	Theatre (capacity)	Classroom (capacity)	Banquet (capacity)	Boardroom (capacity)	Exh Booth (3X3) (capacity)
Meeting Room I	50	5	24	18	18	16	30
Meeting Room II	100	5	48	36	33	24	40
Meeting Room III	100	5	48	36	33	24	40
Meeting Room II & III	200	5	110	80		48	90
Meeting Room IV	60	5	36	24	24	16	30
Meeting Room V	50	5	24	18	18	16	30
Meeting Room IV & V	110	5	66	48	48	36	70



integrated facilities

outdoor VENUES

1/ Event Lawn
up to 2,000 guests

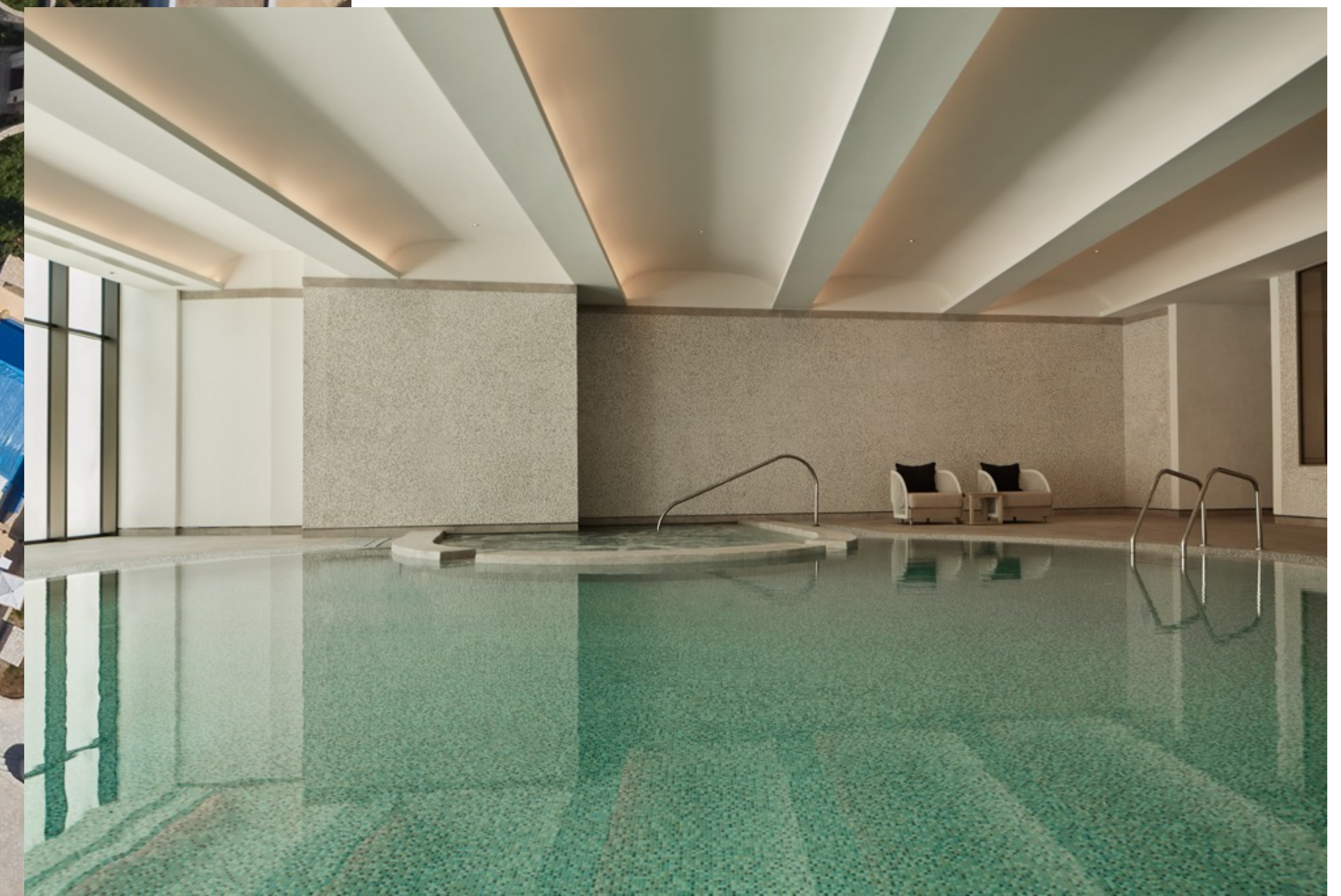


2/ Amphitheatre
up to 200 guests

Spa & GYM



activities



Outdoor / Indoor Pools

activities



Waverider

Tennis Academy / Squash

adventure park



High Ropes
Obstacle Courses



Sinking Ship
Kids' Playground



Climbing Wall

CELESTIAL

gastronomy

AURA



DINING

Olea



ANAÏS

AMBER
DRAGON

Sustainability STRATEGY

Energy Efficiency

Solar panels generating 1.2 MW of renewable energy

Water Treatment

Greywater system for collection

BREEAM Certification

80.4% excellent rating score

Materials

Responsibly sourced construction materials

Operational Waste

Food waste dewatering and composting system

Sustainable Modes of Transport

60 electric vehicle recharging stations

SEE YOU IN CYPRUS



thank you